



# MONTHLY MEMBERSHIP PROGRESS REPORT

District 2 T3

Results as of: 11/30/2016

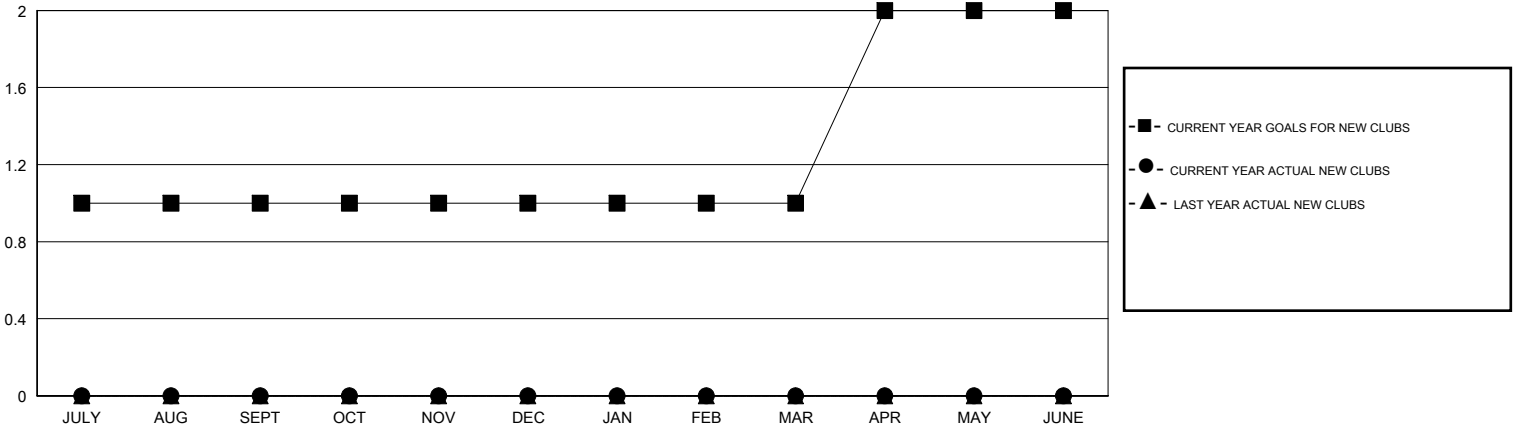
GMT: HAL GRIFFIN

LOCATION TEXAS

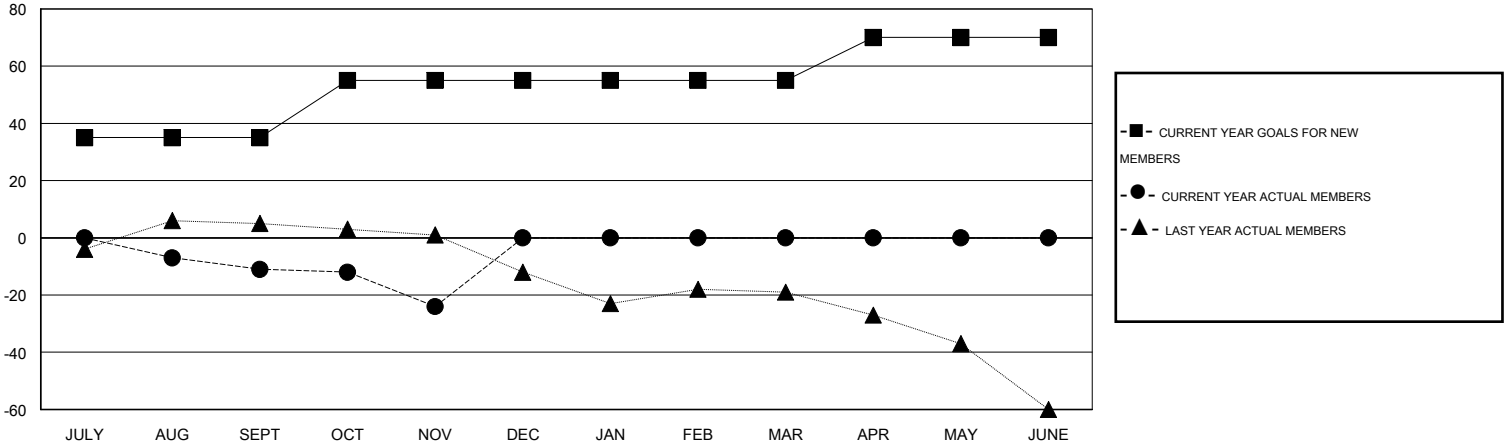
GMT CA 1

Clubs					Members				
RESULTS FOR 2016-2017					RESULTS FOR 2016-2017				
QUARTER	NEW CLUB GOAL	NEW CLUBS	DROPPED CLUBS	NET GAIN/LOSS	QUARTER	NEW MEMBER GOAL	CHARTER AND NEW MEMBERS ADDED	DROPPED MEMBERS	NET GAIN/LOSS
JULY/AUG/SEPT	1	0	0	0	JULY/AUG/SEPT	35	15	26	-11
OCT/NOV/DEC	0	0	0	0	OCT/NOV/DEC	20	13	26	-13
JAN/FEB/MAR	0	0	0	0	JAN/FEB/MAR	0	0	0	0
APR/MAY/JUNE	1	0	0	0	APR/MAY/JUNE	15	0	0	0

GOALS AND ACTUAL NEW CLUBS CUMULATIVE



GOALS AND ACTUAL MEMBERS CUMULATIVE



DROPPED CLUBS: 0	10 CLUBS OF 33 ADDED 1 OR MORE NEW MEMBERS	<b>GENDER DISTRIBUTION</b>
		MALE 460 (60.93%)
		FEMALE 295 (39.07%)
<b>DROPPED MEMBERS</b>	<a href="#">CLICK HERE FOR HEALTH ASSESSMENT DATA</a>	<b>FAMILY UNIT MEMBERS</b> 114
DECEASED 10		HEAD OF HOUSEHOLD 54
CLUB CANCELLED 0		NON-HEAD OF HOUSEHOLD 60
OTHER 42		
<b>TOTAL 52</b>		